

Campagnolo[®]

SYNT[®]



SYNT®

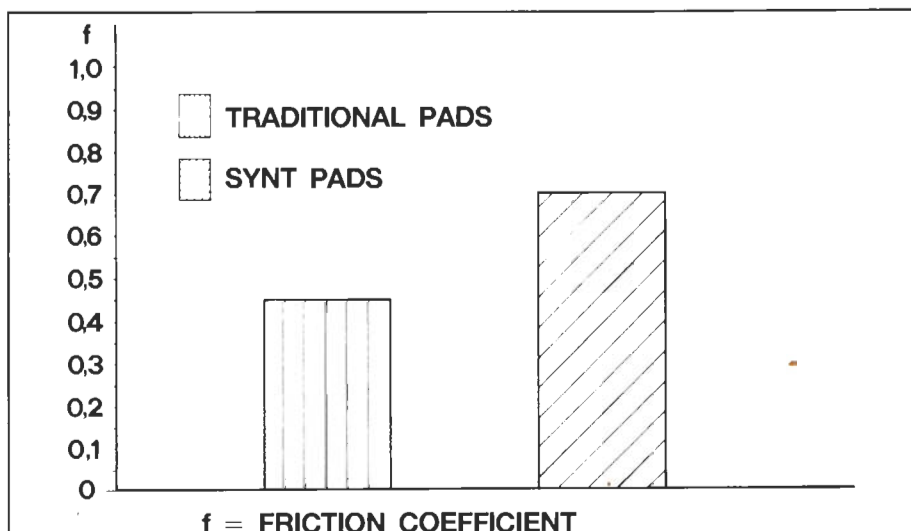


SINTERED BRAKE PADS

SPEED AND SAFETY

The technical evolution of cycling has raised performance levels to heights that could not have been imagined until just a few years ago. Records are being broken more and more frequently, performance

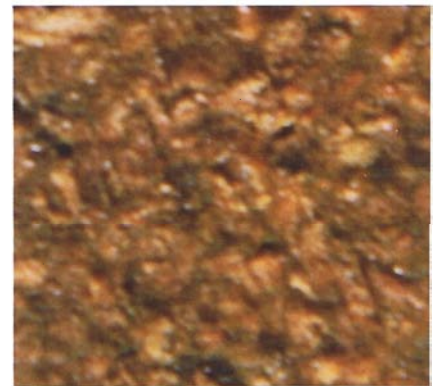
averages in elite events are getting higher, and all riders whether professional or amateur, are getting faster all the time. Because of this evolution, more and more attention is being paid to safety, an area in which brakes are without the slightest doubt the most important component.



CAMPAGNOLO: SAFETY AND PERFORMANCE

Campagnolo have devoted a large part of their research and development to brake systems, introducing numerous technical innovations to their own brakes. Some of Campagnolo's most recent innovations include: the articulated parallelogram system used by the DELTA brake of the Record group, the "MONO-PLANER System" for Chorus brakes, the "PENTA DRIVE System" for Croce d'Aune brakes, and the "POWER GRADE System" which allows for a gradual transformation of the force applied to the hand levers.

In addition to these various brake systems, Campagnolo have also paid special attention to their brake pads. Alongside the competition proven RECORD pad, Campagnolo presents its new series of SYNT brake pads. Like the familiar RECORD pad, SYNT pads are made of a vulcanized blend of elastomers, but it is blended with different components and bonded using a brand new manufacturing process by Campagnolo.



MUSIC FOR THE BICYCLE

The new SYNT compound has a rigid structure made by mixing and vulcanizing different materials like Colophony, Phenolic resin, elastomers and other special components. Colophony, normally used by violinists to increase the friction of the bow on the strings of their instruments, plays a large part in the composition of the SYNT brake pads.