

Campagnolo[®]

SYNCRO[®]



SYNCRO

The possibility of centering the chain on a specific freewheel sprocket through the use of the shift lever has historically been a characteristic of non-competitive bicycles.

In light of the increased attention to this category of the bicycle market by Campagnolo, we have created SYNCRO shift levers to address the needs of these cyclists, as well.

Specifically, this new product allows the cyclist to center the chain on the sprocket easily and smoothly by means of a new shifting selector mechanism; and also incorporates the conventional friction feature.

The SYNCRO is a sophisticated dual function shift lever that offers the user both conventional friction and selector (INDEX) shifting capabilities.

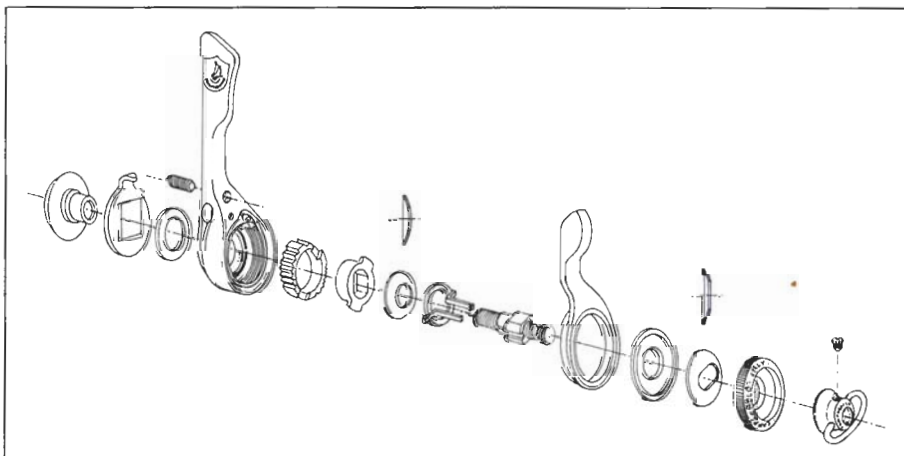
The SYNCRO shift lever is actually composed of two levers: the main one functioning as the gear selector, while the second smaller one, coaxial with the first, changes the system from selector (INDEX) mode to friction mode.

In selector mode the SYNCRO is adjusted by regulating the cable tension with the barrel adjuster on the derailleur. For derailleurs not equipped with a cable adjuster one is included in the SYNCRO kit.

In order to change to friction mode depress the second lever until the stop click is heard (approx. 45°).

The second lever is held parallel to the first by the knurled aluminium ring nut located between the wing nut and the second lever. The release of the second lever may be adjusted by a small set screw located on the body of the main lever.

The SYNCRO offers the unique feature of a fully adjustable friction mode. The wing nut allows the rider to select the amount of friction to his or her personal needs.



Choose yo

