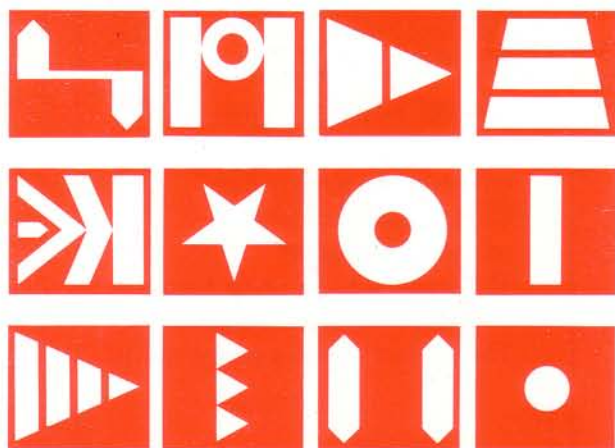
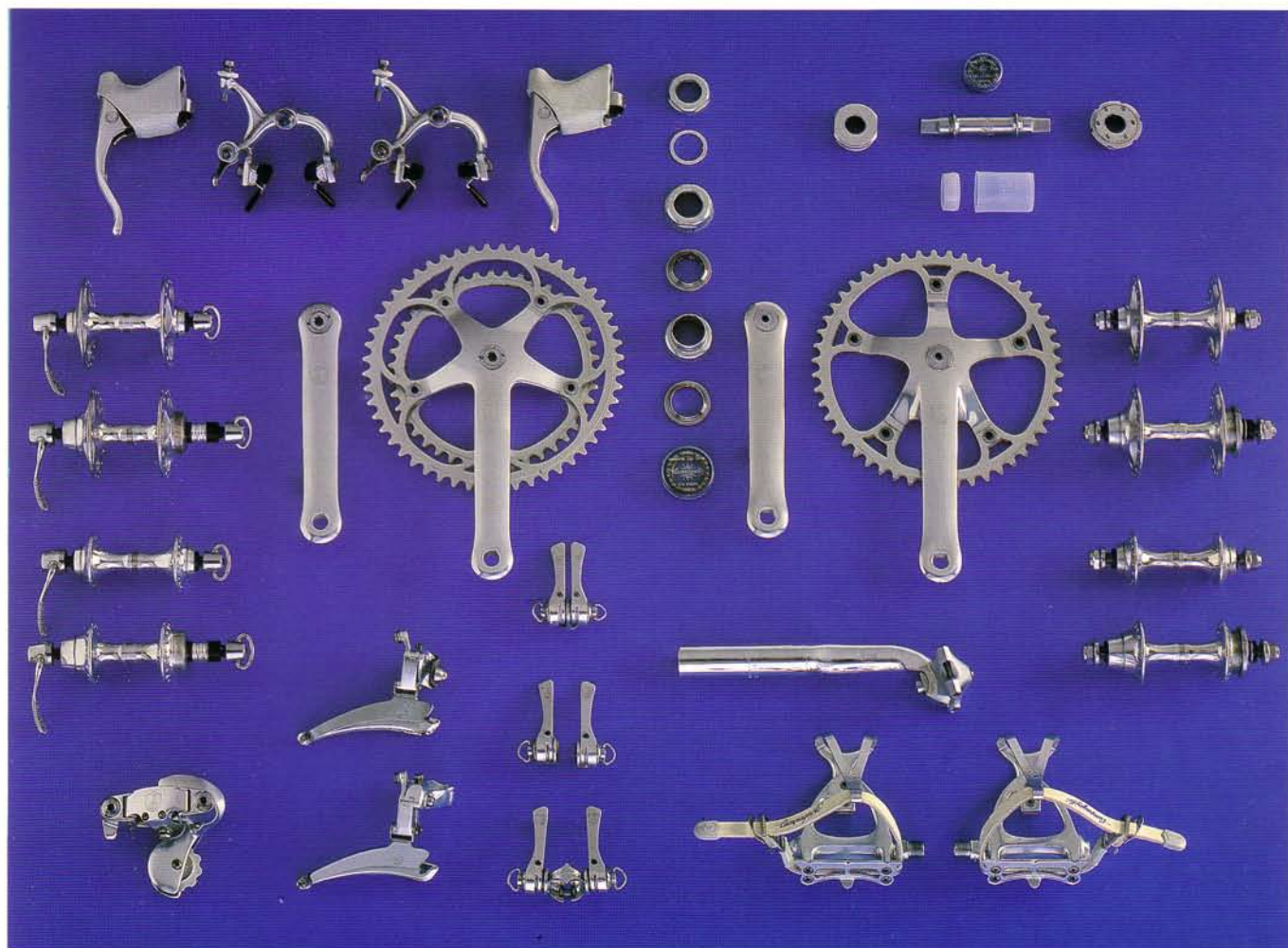


*Campagnolo*<sup>®</sup>



RECORD<sup>®</sup>



## RECORD® group

188

0102050 double spring gear;  
0104018 clip-on front changer;  
0118071-0118072 braze-on double control levers;  
606 gear cable;  
608 front changer cable;  
617 steel casing;  
322/101 small flange hubs set;

306/101 chainset with incorporated extractor;  
303/101 bottom bracket set;  
305/101 pedals set complete with toe-clips and toe-straps;  
304/104 head set;  
316/101 seat pillar with one fixing screw;

115/00 brakes set preset for the passage of the outer, lateral and inner cables, complete with cables and casings;  
1072 fixing bolt and nut for seat pin  $\varnothing$  8.

## RECORD® pista group

182

321/102 large flange hubs set;  
306/102 chainset;  
303/102 bottom bracket set;

305/101 pedals set with toe-clips and toe-straps;  
304/104 head set;

316/101 seat pillar with one fixing screw;  
1072 fixing bolt and nut for set pin  $\varnothing$  8.